

The PhilateliKid

The newsletter for Stamp Collecting Clubs for Kids (SCCFK)

Collect Stamps (The Most Educational Hobby)

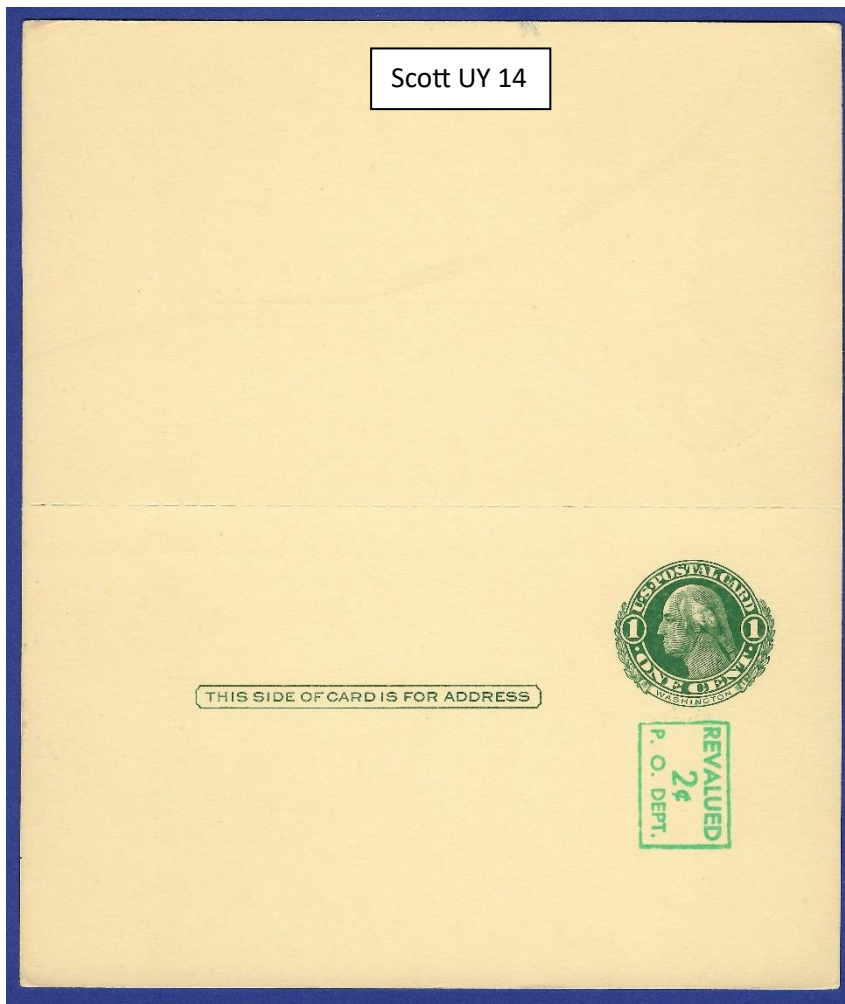
www.stampcollectingclubsforkids.org

March 1, 2024

In the May 2022 issue of *The Philatelikid*, we began brief descriptions of various “Back of the Book” (“BOB”) listings in the Scott Catalogues. In subsequent issues we looked at stamps which begin with the letter “B,” “C,” “CE,” “CL,” “CM,” “CB,” “CO,” “E,” “D,” “F,” “FA,” “J,” “K,” “L,” “LO,” “O,” “PR,” “PN,” “PS,” “WS,” “BK,” “Q,” “JQ,” “QE,” “CVP,” “WX,” “QI,” “#X,” “REA,” “RV,” “RY,” “-P,” “UX,” “SPCVP,” and “U.” This month we will look at “UY.”

Stamps Beginning with the prefix “UY”

Stamps in the Scott Catalogue with the prefix “UY” are not stamps at all. They are Paid Reply postal cards.



Paid Reply postal cards are sold by the Post Office as two unsevered cards. The sender folds the card in half. The outer card is addressed to the recipient, with the message on the back (reverse) side. The recipient tears the cards apart, keeps the first card, and uses the second card to respond. The second card, having postage already printed on it, does not require the original recipient to apply any stamps. At left is Scott UY 14. Note the first card has printed on it an image of George Washington. The reply card has Martha Washington.

The letter F
cancel >>>>>
(see page 2)

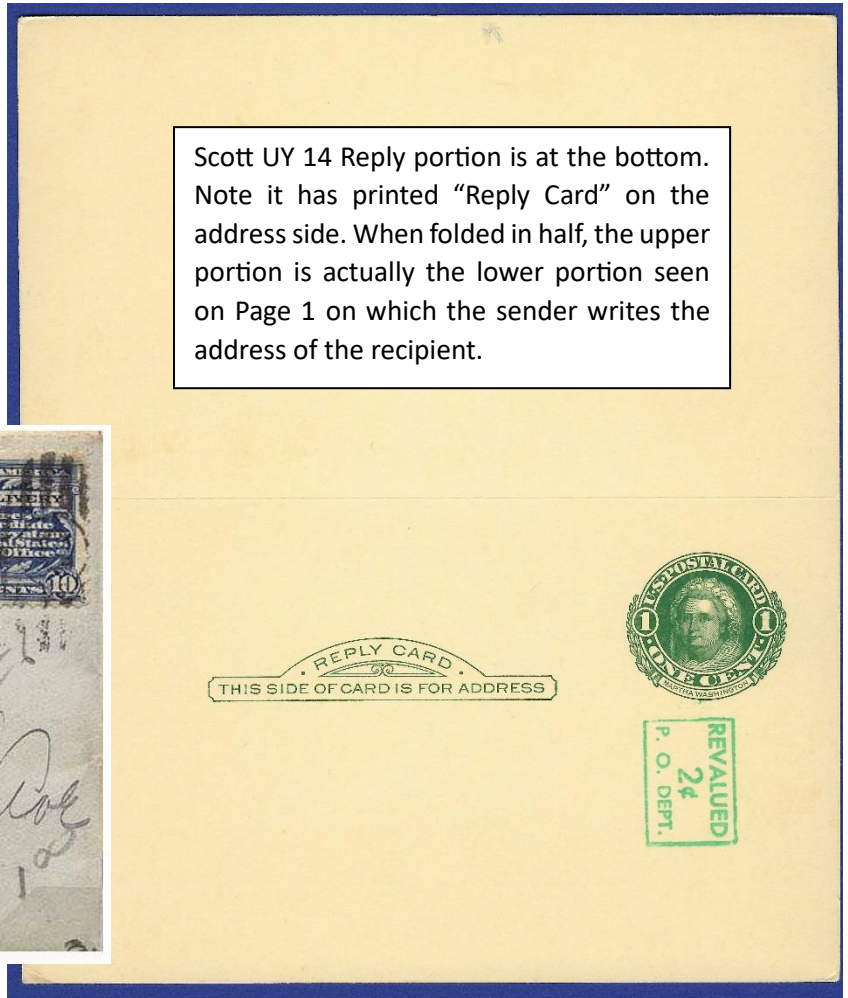


The Post Office began selling Paid Reply cards in 1892.

The letter "F" in the cancel

In last month's *The Philatelikid*, I said I did not know what the letter "F" in the cancellation signified. Here is an explanation by renowned philatelist Roger Brody, along with photos of cancels with the letter "G" and a cancel with a number.

Scott UY 14 Reply portion is at the bottom. Note it has printed "Reply Card" on the address side. When folded in half, the upper portion is actually the lower portion seen on Page 1 on which the sender writes the address of the recipient.



At the turn of the 20th Century..... Post Office **Stations** received and dispatched mail, issued money-orders, registered mail and sold stamps. Stations were designated by local names or letters of the alphabet. Their postmarks and cancels included the name of the main office (city) name and the **station name or letter**.

The designation **Sub-station** was codified Nov 12 1897, PMG Order No 595 to identify postal stations which issued money-orders, registered mail and sold stamps but did not receive or dispatch first-class mail. **Sub-station** postmarks and cancels were **identified by numbers**. (See "**SUB STA. No. 106**" at right>>>)

The Letter F station in New York, is at 149 E 23rd St, New York, NY 10010. (The letter "F" appears in the NYC cancel on Page 1, lower right corner.)



Stamp Collecting Clubs for Kids is a 501(c)(3) organization. Donations are greatly appreciated and if \$10 or more you will be sent a written receipt. You also can donate via PayPal on our website: www.stampcollectingclubsforkids.org or www.yummystampcollecting.org which redirects you to the same website.